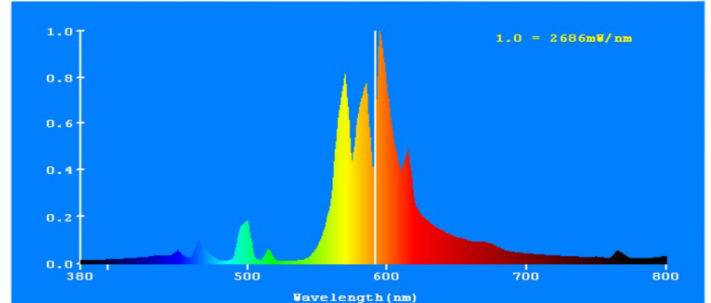




TECHNICAL DATA HIGH PRESSURE SODIUM

EMPEROR LIGHTING
400W HPS HIGH OUTPUT
PRODUCT CODE: 58995

PERFORMANCE DATA		
	Unit	Parameter
Initial lumens after 100hrs operation	Lumen	54,000
Correlated colour temperature	K	2,100
Colour rendering index		20
Average lamp life	Hours	24,000
Startup Voltage	V	198
Startup time	Second	10
Startup Voltage (-18°C)	V	220
Warm up time	Minute	5
Operating position	Universal	



ELECTRICAL CHARACTERISTICS		
	Unit	Parameter
Nominal lamp Voltage	V	110
Nominal lamp Current	A	4.4
Nominal lamp Wattage	W	400
Maximum startup Current	A	6.5
Ballast requirements	Use with ballast rated for ANSI S51 lamp	

IGNITOR REQUIREMENTS		
	Unit	Parameter
Minimum pulse height	V	2500
Maximum pulse height	V	4000
Minimum pulse width	µsec	1.5
Pulse frequency	per half cycle	1

PHYSICAL DATA		
	Unit	Parameter
Length	mm	285
Bulb diameter	mm	46
Maximum bulb temperature	°C	400
Maximum base temperature	°C	250
Base designation		E39
Bulb designation		T46
Bulb material		borosilicate
Arc tube material		quartz
Bulb finish		clear
Burning Position		Universal

Warning
Risk of electric shock:
Be sure to turn electrical power off before inserting, removing or cleaning the lamp.

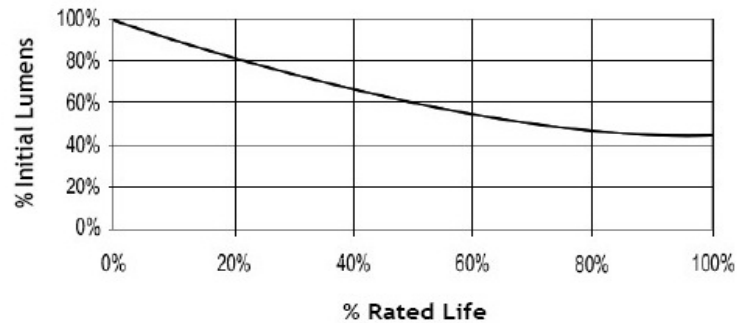
Risk of fire:
Never use lamps in close proximity to flammable items such as: combustible materials or paper.
Always operate lamps in enclosed areas.
Always operate lamps at proper current or voltage. Failure to do so may cause the lamp to leak or burst.

Risk of burn:
Allow up to 10 minutes after lamp is off before handling. Failure to do so may cause burns.
Do not operate lamps with any physical damage. This could cause the lamp to burst!
Lamps should be affixed securely into the socket to reduce loosening due to vibrations.

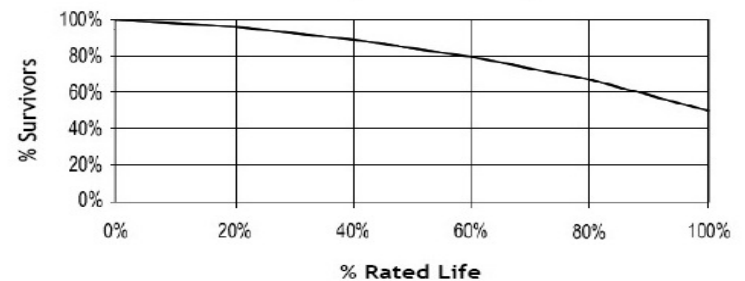
Caution:
Do not look at operating lamps directly. This can cause eye injury.
The lamp manufacturer will not be responsible for property damage, personal damage or personal injury from lamps used in non-certified equipment.

This lamp contains mercury
Manage in accordance with disposal regulations. Please Recycle.

Lumen Maintenance



Lamp Mortality



EMPEROR LIGHTING Tel 800-575-2515
Distributed by MegaWatt Fax 450-226-7843
636 route 364, Morin-Heights EMPERORLIGHT.COM
Canada J0R 1H0